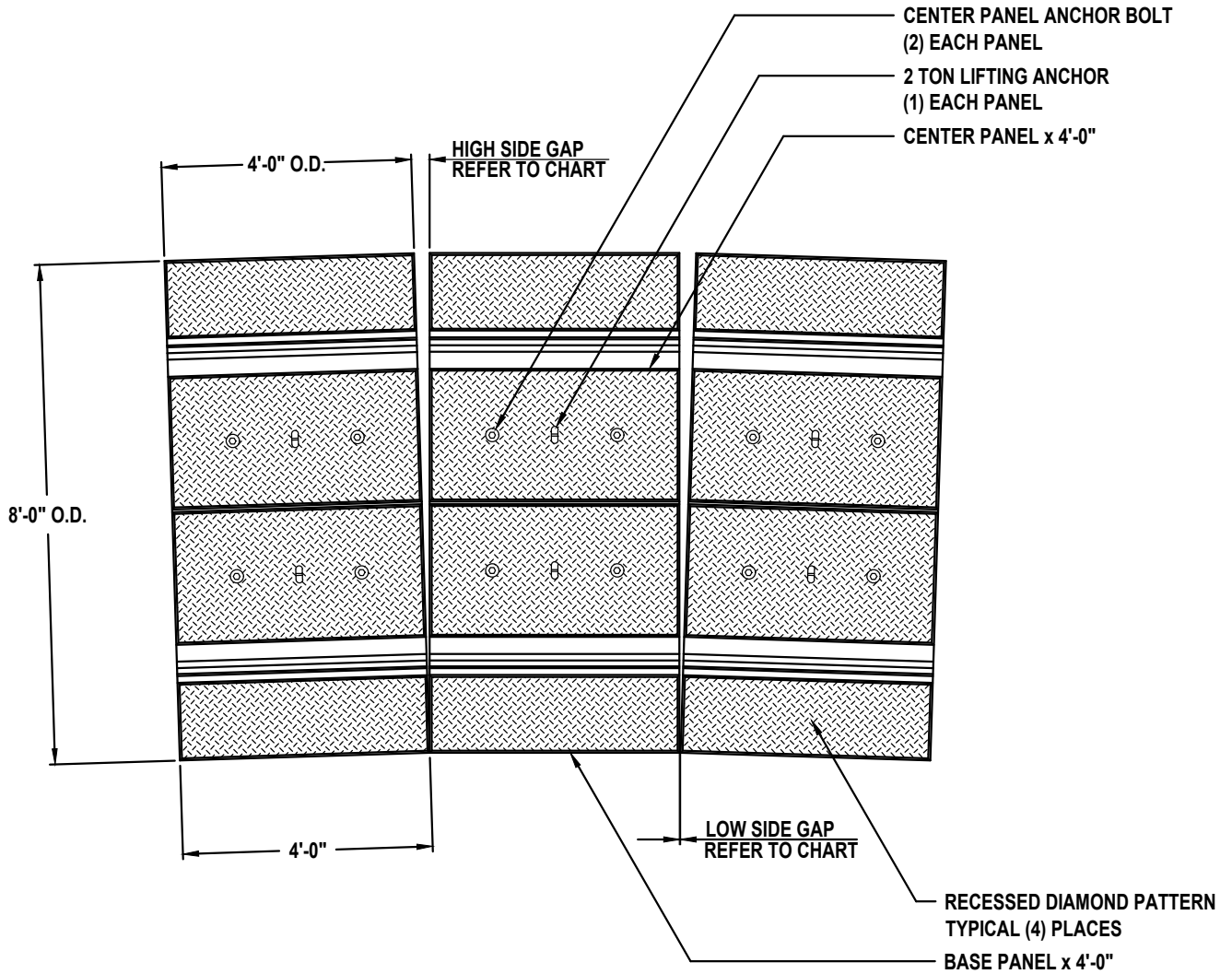


# PREMIER® CURVED ALIGNMENTS - 4'-0" DIVERGED UNITS



## 4'-0" DIVERGED UNITS

**NOTES:**

1. PREMIER UNITS MAY BE LAID WITH 1/2 INCH DIVERGENCE.
2. TAPERED SECTIONS MAY BE USED TO REDUCE DIVERGENCE.
3. TAPER SHORTENS ONE SIDE OF 4'-0" SECTION BY 1 INCH.