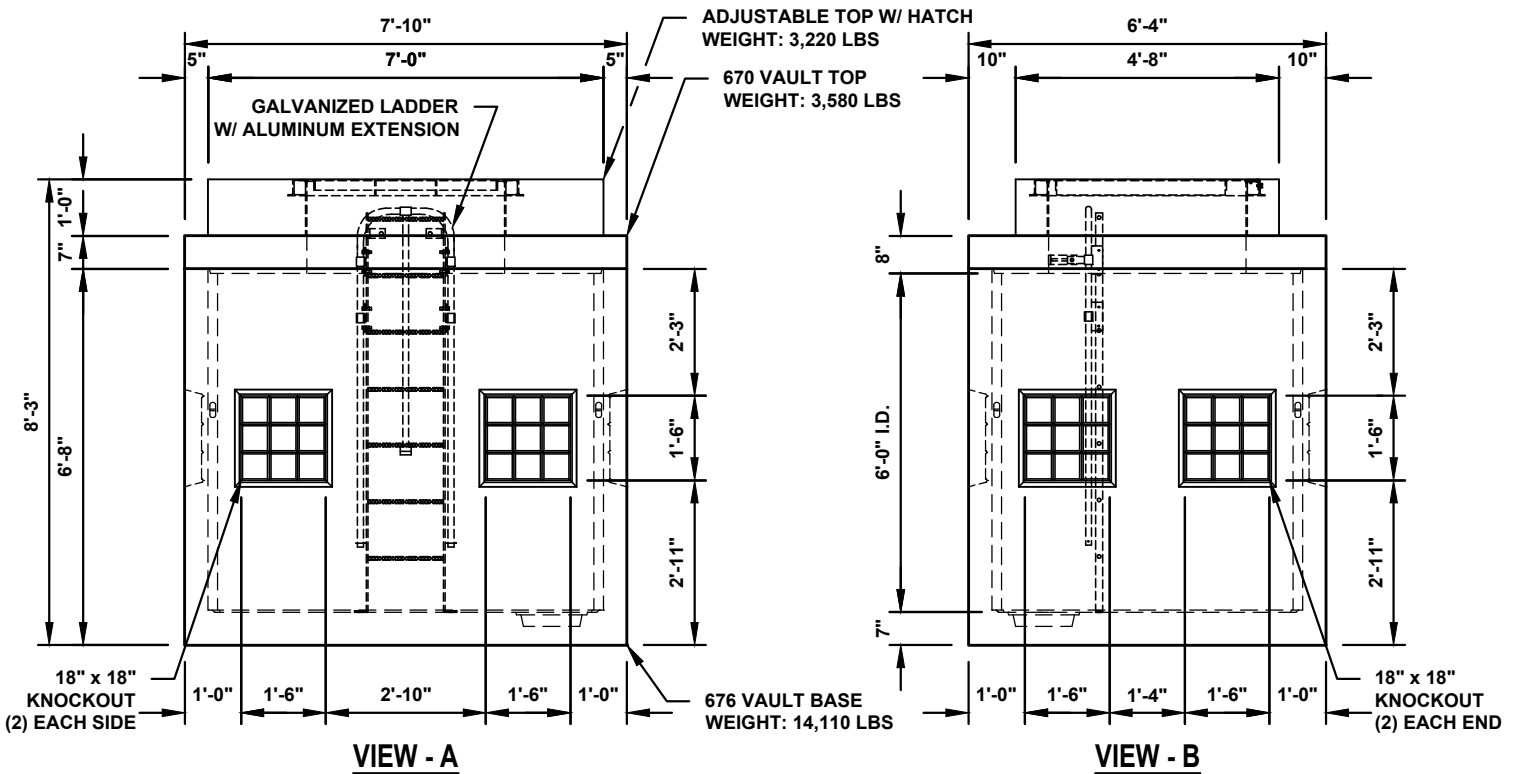
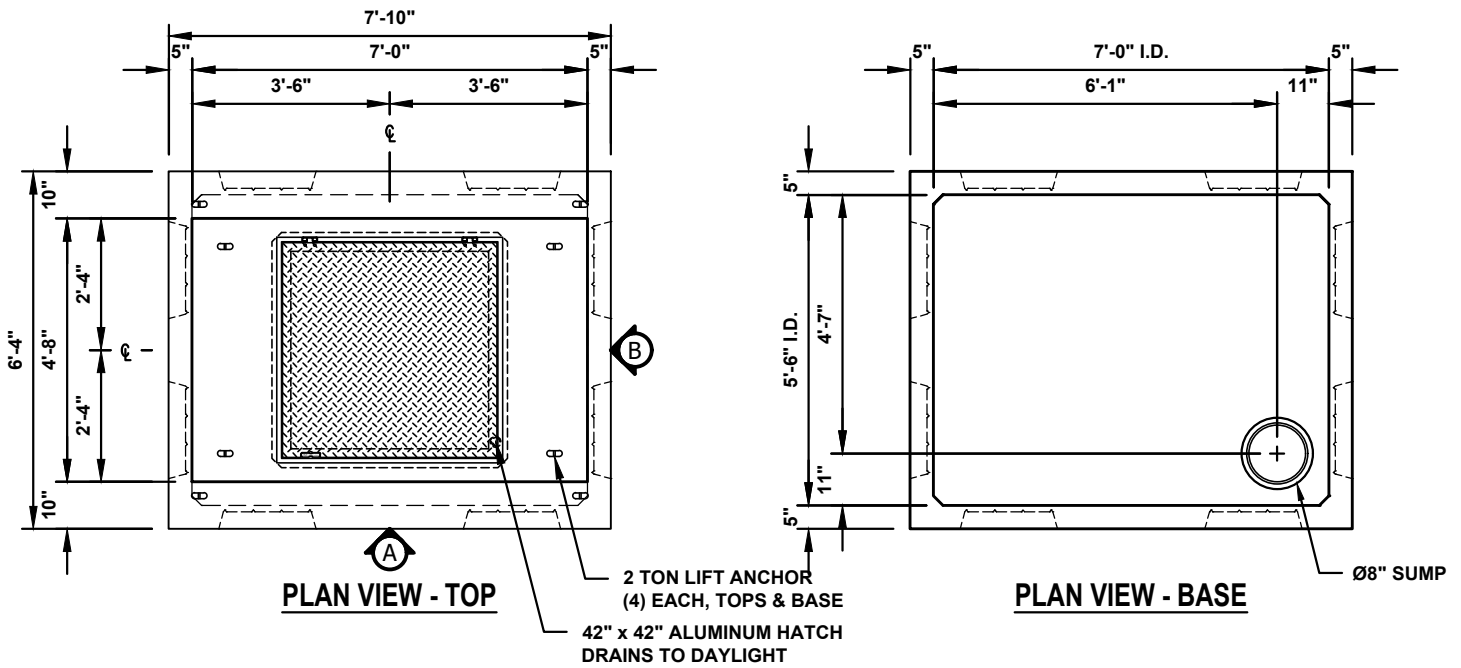


TVWD - 676 DCV/DCDV



- NOTES:**
1. INTERNAL PLUMBING/HARDWARE PROVIDED AND INSTALLED BY OTHERS.
 2. REFER TO MANUFACTURERS DRAWING(S) FOR HATCH DETAILS.
 3. CRYSTALSEAL COATING APPLIED TO EXTERIOR SURFACES.
 4. WEIGHTS LISTED ARE APPROXIMATE.