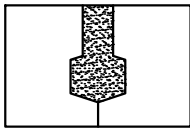
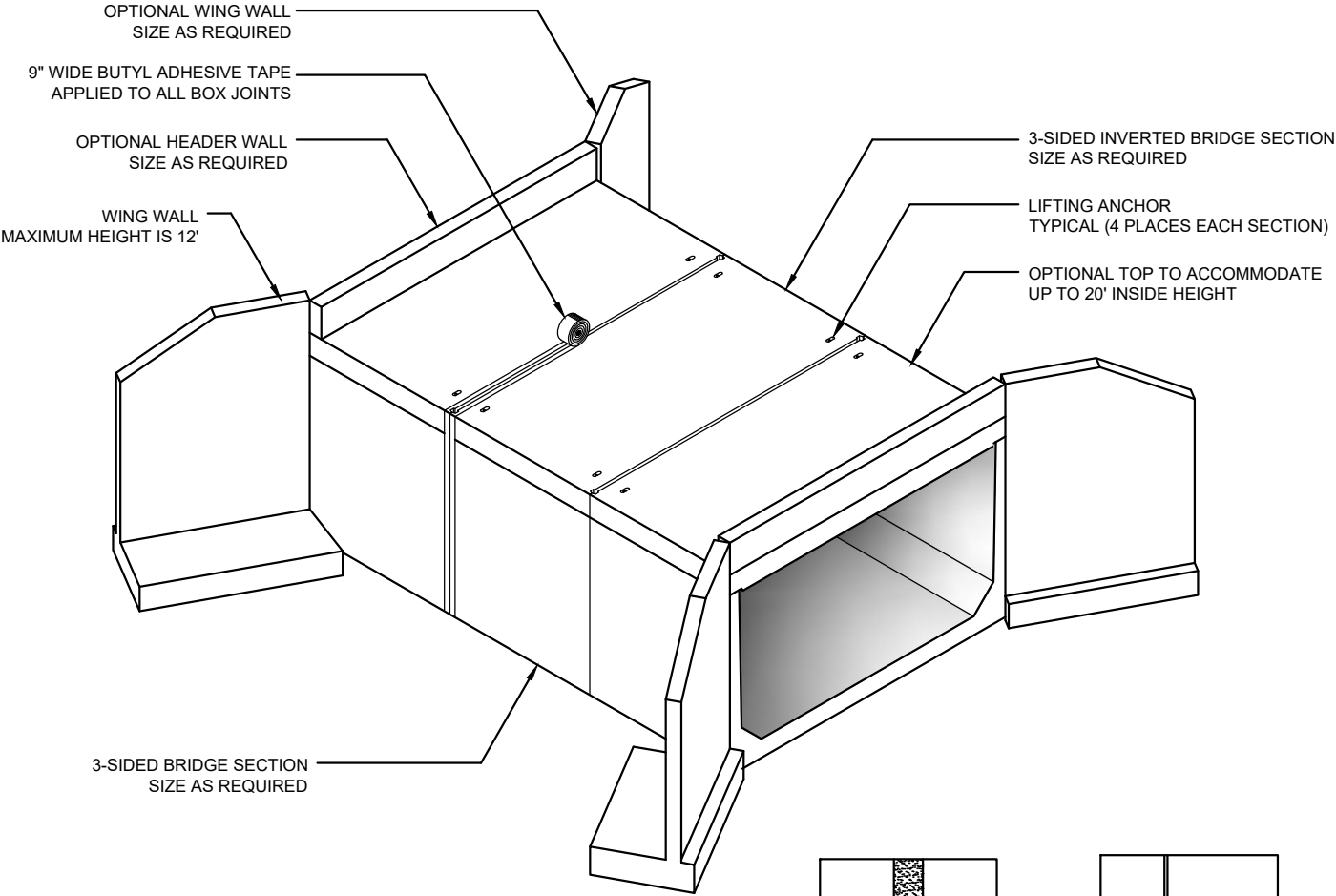
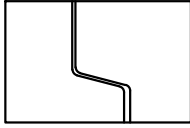


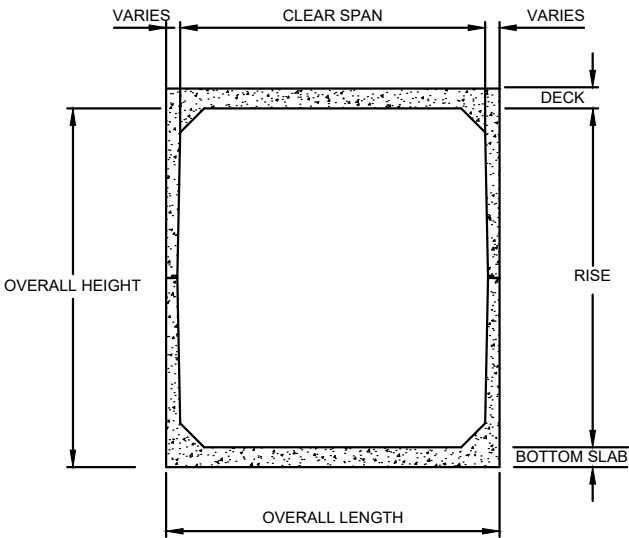
SPLIT BOX CULVERT



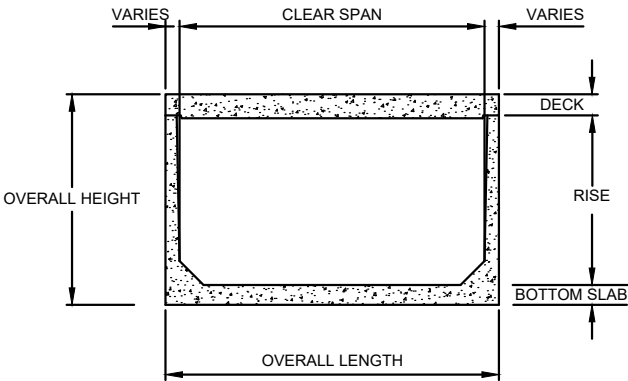
GROUT JOINT



SHIPLAP JOINT



SECTION VIEW



SECTION VIEW

- NOTES:**
1. WHERE REQUIRED USE NON-SHRINK GROUT CONFORMING TO ASTM C1107.
 2. EACH BRIDGE JOINT SHALL BE WRAPPED WITH 9" WIDE BUTYL ADHESIVE TAPE.