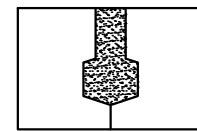
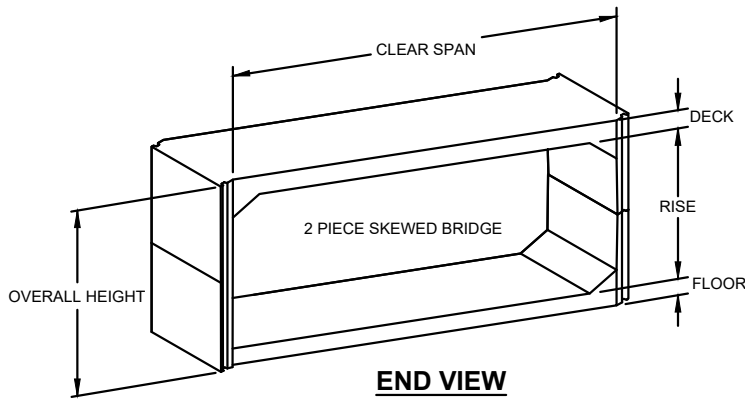
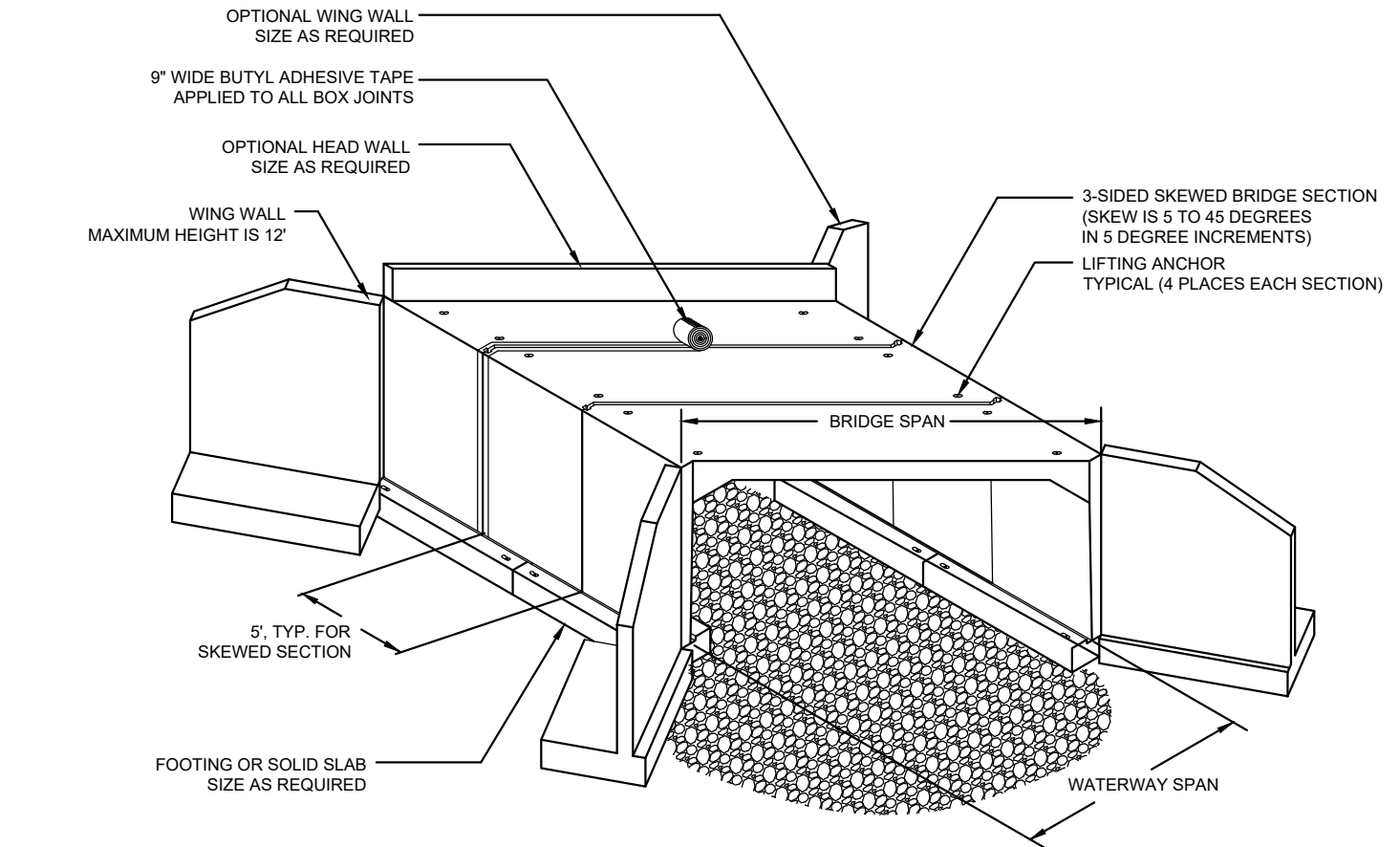
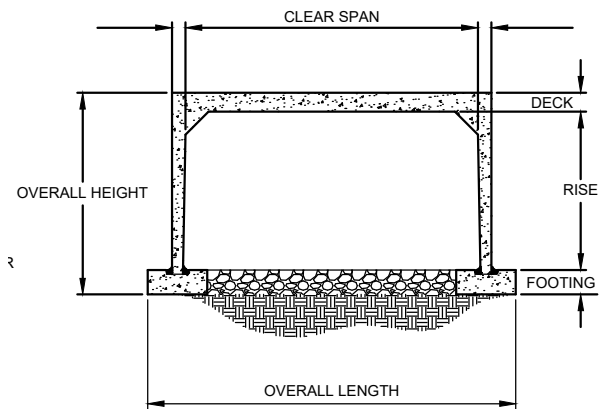


3-SIDED SKEWED BRIDGE



GROUT JOINT



SECTION VIEW

NOTES:

1. FOOTING JOINTS TO BE STAGGERED IN RELATION TO BRIDGE JOINTS.
2. USE NON-SHRINK GROUT CONFORMING TO ASTM C1107. GROUT ALL JOINTS.
3. EACH BRIDGE JOINT SHALL BE WRAPPED WITH 9" WIDE BUTYL ADHESIVE TAPE.
4. SKEWED BRIDGE REQUIRES GROUT JOINT (NO SHIPLAP)