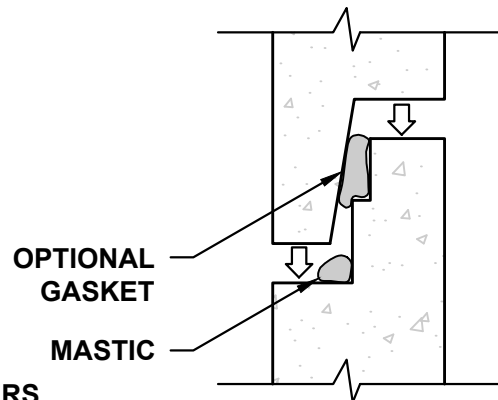


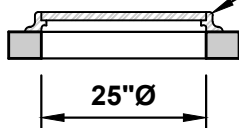
72"Ø MANHOLE - WITH FLAT TOP



JOINT DETAIL

STANDARD JOINT SEALANT IS MASTIC.
RUBBER GASKET IS OPTIONAL.

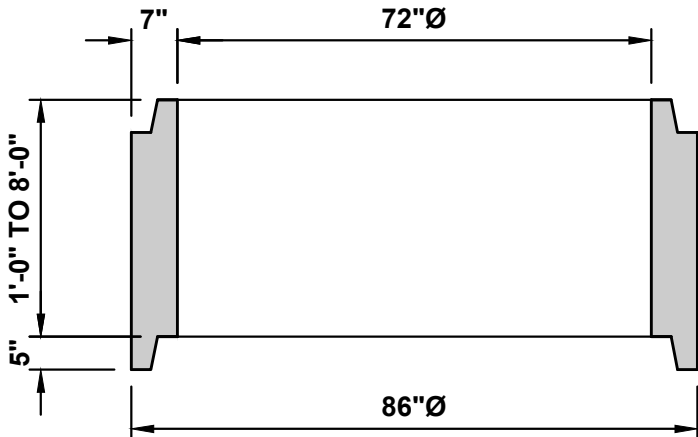
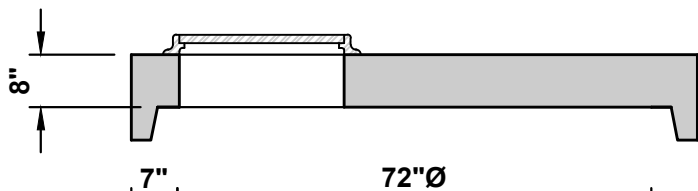
CAST IRON FRAMES AND COVERS ARE AVAILABLE IN SUBURBAN 3" HEIGHT AND STANDARD 7" HEIGHT (SUBURBAN 3" HEIGHT SHOWN)



25"Ø

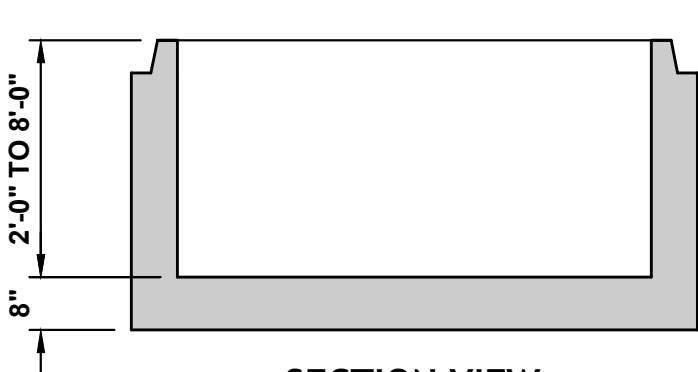
72"x25" FLAT TOP
WEIGHT 4,170LBS

GRADE RINGS AVAILABLE IN
2", 3", 4" AND 6" HEIGHTS



72"Ø MANHOLE SECTION

- 1'-0" (1,850LBS)
- 2'-0" (3,695LBS)
- 3'-0" (5,540LBS)
- 4'-0" (7,385LBS)
- 5'-0" (9,230LBS)
- 6'-0" (11,075LBS)
- 7'-0" (12,925LBS)
- 8'-0" (14,770LBS)



72"Ø MANHOLE BASE

- 2'-0" (7,405LBS)
- 3'-0" (9,250LBS)
- 4'-0" (11,100LBS)
- 5'-0" (12,945LBS)
- 6'-0" (14,790LBS)
- 7'-0" (16,635LBS)
- 8'-0" (18,480LBS)

SECTION VIEW

NOTES:

1. MANHOLE ASSEMBLY CONFORMS TO ASTM-C478.
2. ALL MANHOLE JOINTS SEALED WITH MASTIC OR RUBBER GASKET.
3. REINFORCING AS PER WSDOT STANDARD PLANS.