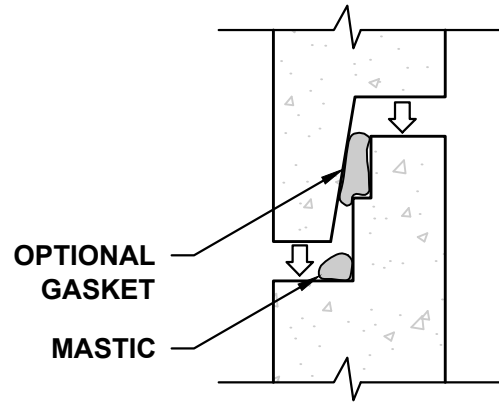


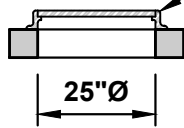
120"Ø MANHOLE - WITH FLAT TOP



JOINT DETAIL

STANDARD JOINT SEALANT IS MASTIC.
RUBBER GASKET IS OPTIONAL.

CAST IRON FRAMES AND COVERS ARE AVAILABLE IN SUBURBAN 3" HEIGHT AND STANDARD 7" HEIGHT (SUBURBAN 3" HEIGHT SHOWN)



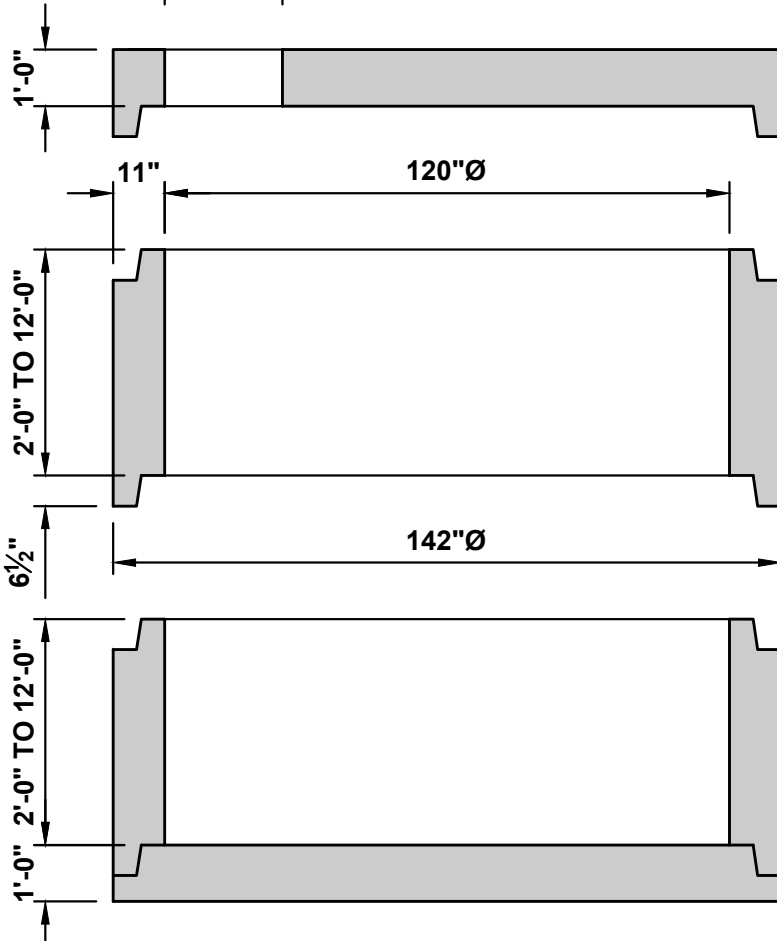
120"x25" FLAT TOP
WEIGHT 12,020LBS

GRADE RINGS AVAILABLE IN
2", 3", 4" AND 6" HEIGHTS

120"Ø MANHOLE SECTION

- 2'-0" (9,620LBS)
- 3'-0" (14,430LBS)
- 4'-0" (19,240LBS)
- 5'-0" (24,050LBS)
- 6'-0" (28,860LBS)
- 7'-0" (33,670LBS)
- 8'-0" (38,480LBS)
- 9'-0" (43,290LBS)
- 10'-0" (48,100LBS)
- 11'-0" (52,910LBS)
- 12'-0" (57,720LBS)

120"Ø MANHOLE BASE
WEIGHT 12,020LBS



SECTION VIEW

NOTES:

1. MANHOLE ASSEMBLY CONFORMS TO ASTM-C478.
2. ALL MANHOLE JOINTS SEALED WITH MASTIC OR RUBBER GASKET.
3. REINFORCING AS PER WSDOT STANDARD PLANS.