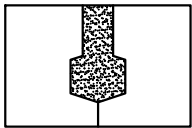
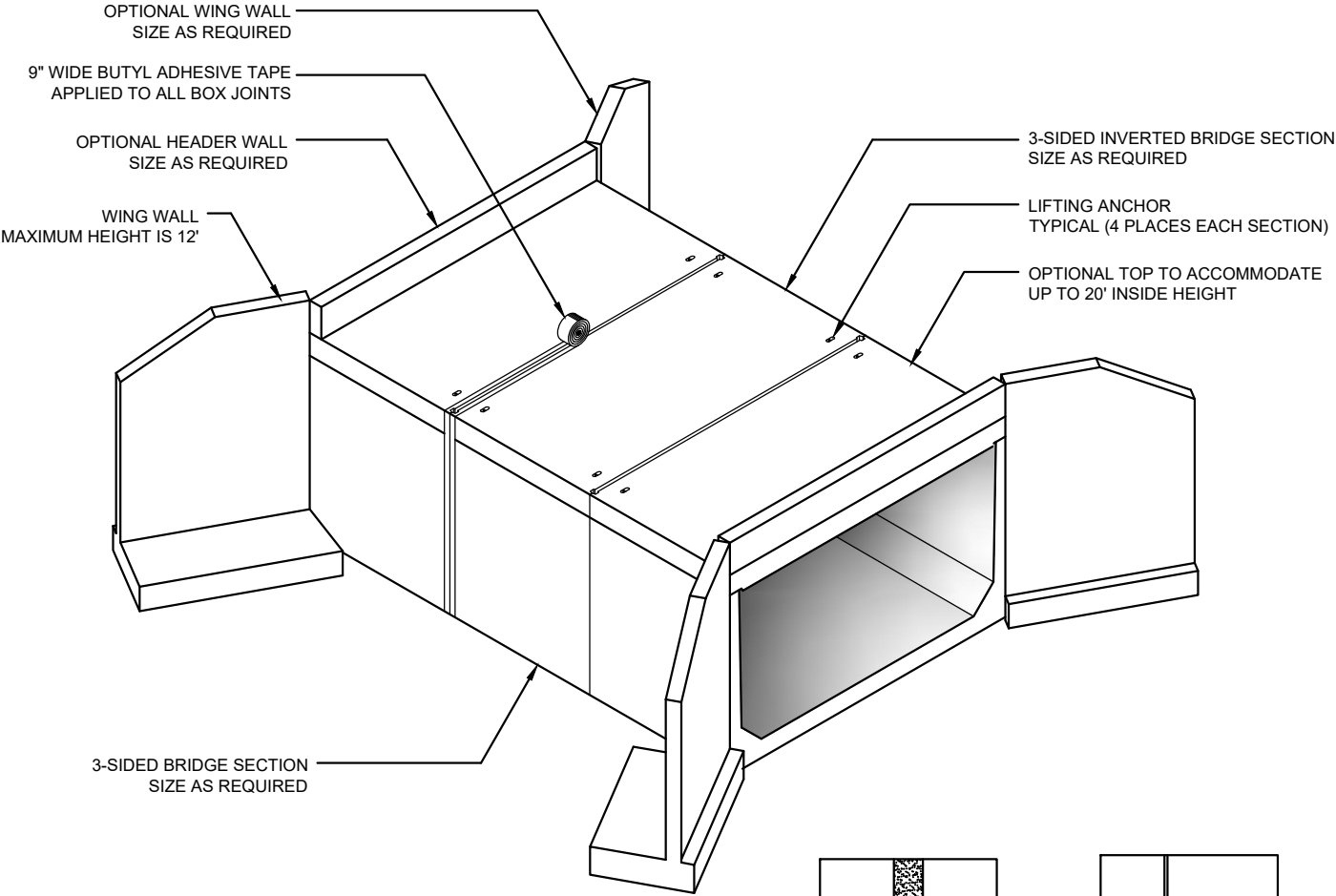
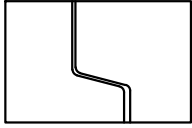


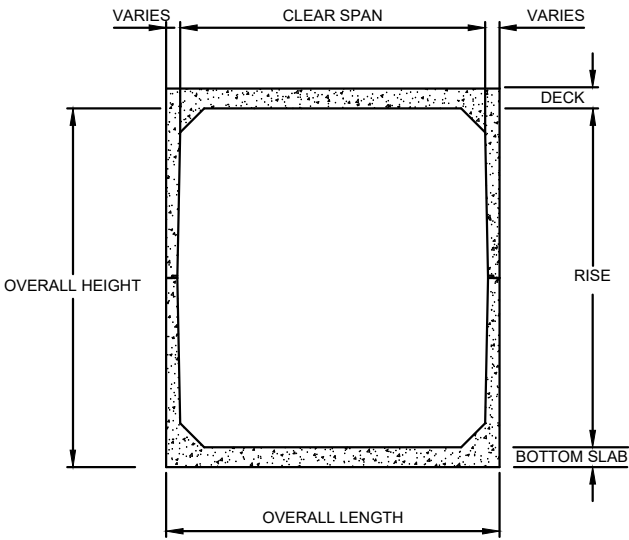
# SPLIT BOX CULVERT



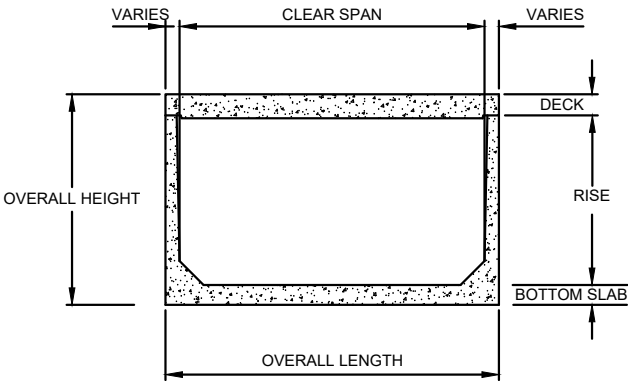
**GROUT JOINT**



**SHIPLAP JOINT**



**SECTION VIEW**



**SECTION VIEW**

- NOTES:**
1. WHERE REQUIRED USE NON-SHRINK GROUT CONFORMING TO ASTM C1107.
  2. EACH BRIDGE JOINT SHALL BE WRAPPED WITH 9" WIDE BUTYL ADHESIVE TAPE.