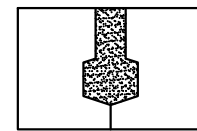
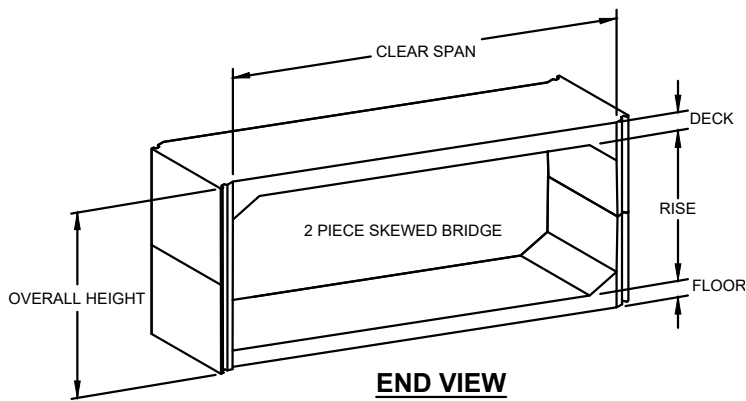
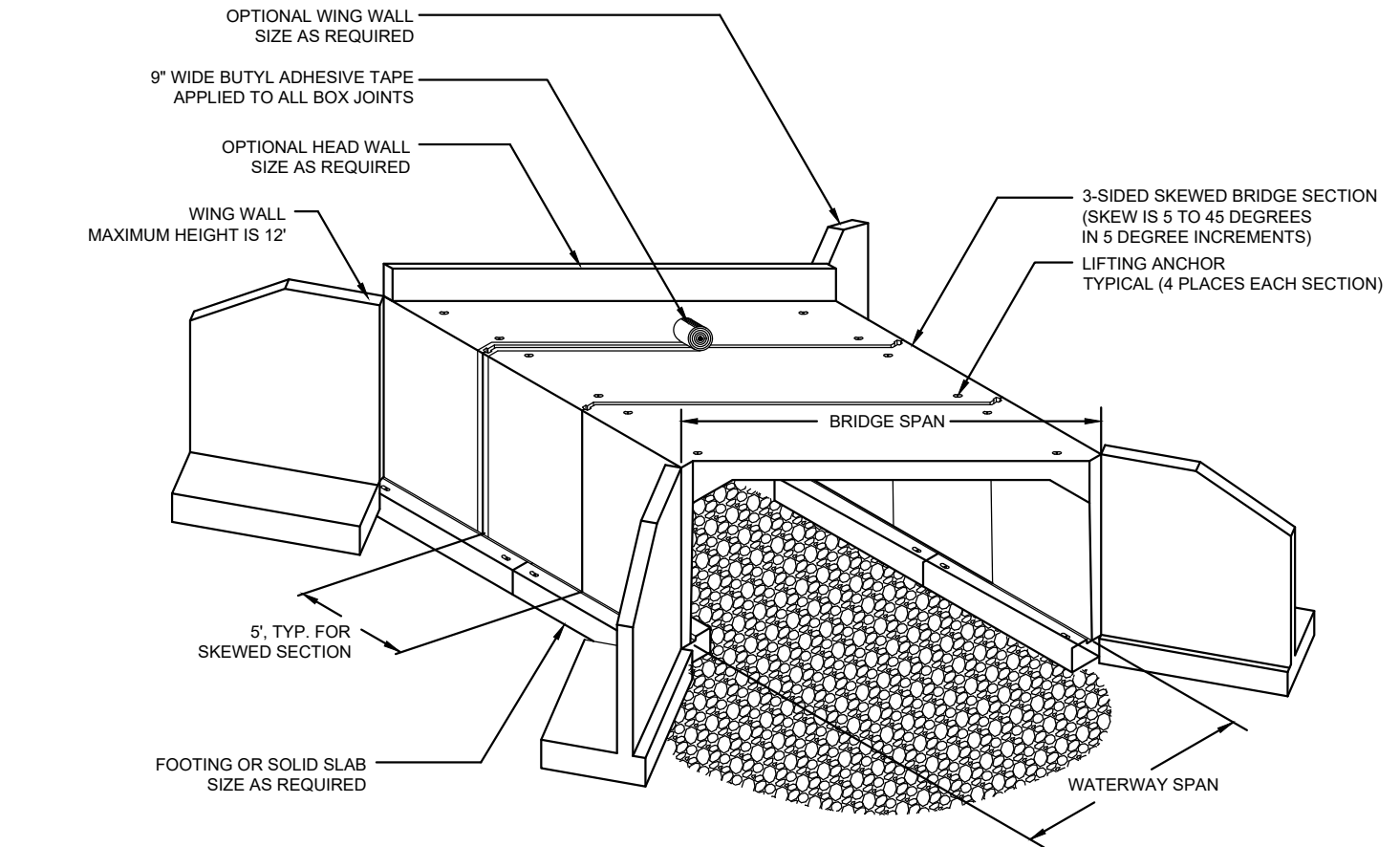
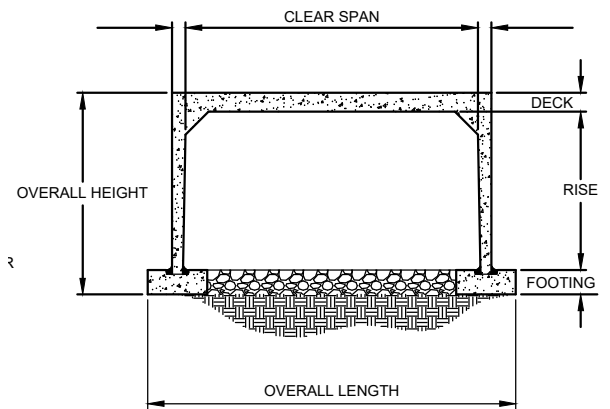


# 3-SIDED SKEWED BRIDGE



**GROUT JOINT**



**NOTES:**

1. FOOTING JOINTS TO BE STAGGERED IN RELATION TO BRIDGE JOINTS.
2. USE NON-SHRINK GROUT CONFORMING TO ASTM C1107. GROUT ALL JOINTS.
3. EACH BRIDGE JOINT SHALL BE WRAPPED WITH 9" WIDE BUTYL ADHESIVE TAPE.
4. SKEWED BRIDGE REQUIRES GROUT JOINT (NO SHIPLAP)