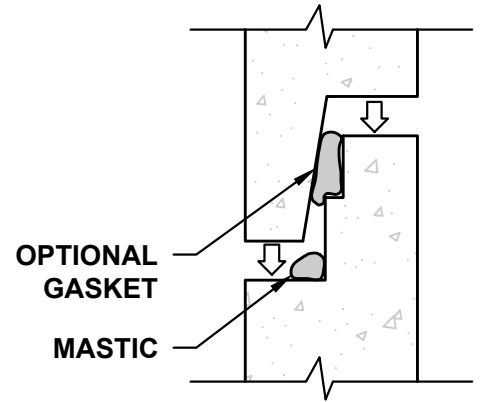


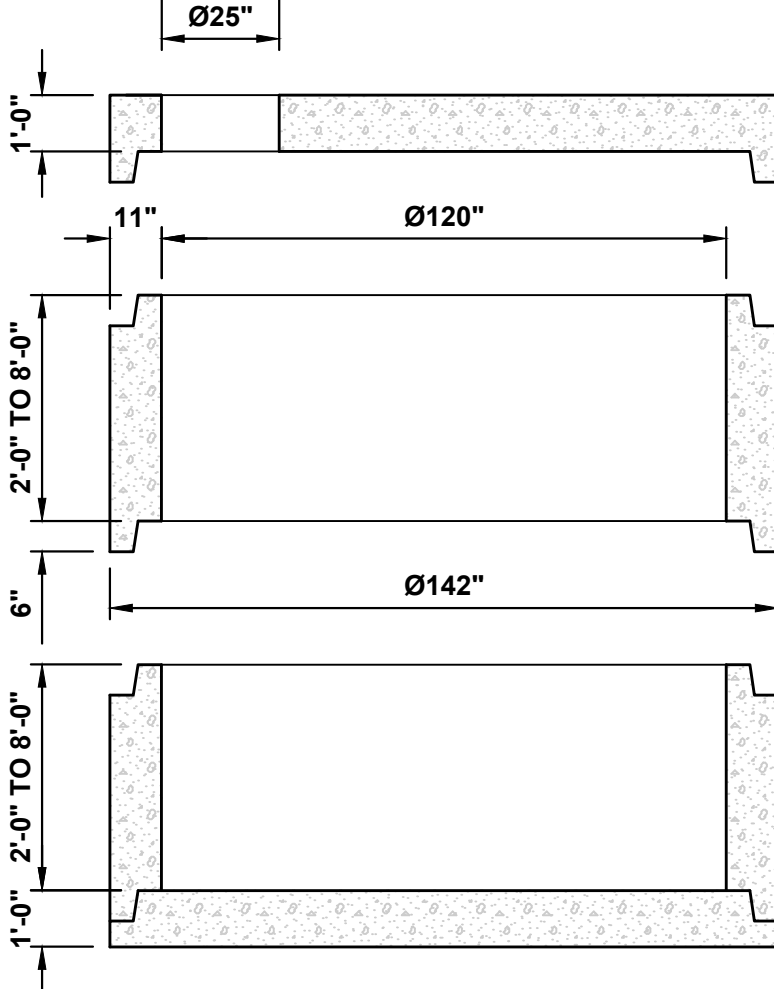
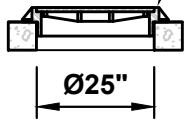
# Ø120" MANHOLE - WITH FLAT TOP



## JOINT DETAIL

STANDARD JOINT SEALANT IS MASTIC.  
RUBBER GASKET IS OPTIONAL.

CAST IRON FRAMES AND COVERS ARE AVAILABLE IN SUBURBAN 3" HEIGHT AND STANDARD 7" HEIGHT (SUBURBAN 3" HEIGHT SHOWN)



120"x25" FLAT TOP  
WEIGHT 18,150 LBS  
120"x48" FLAT TOP (REDUCING)  
WEIGHT 16,750 LBS

Ø120" MANHOLE SECTION  
2'-0" (9,481 LBS)  
3'-0" (14,293 LBS)  
4'-0" (19,064 LBS)  
5'-0" (23,875 LBS)  
6'-0" (28,646 LBS)  
7'-0" (33,459 LBS)  
8'-0" (38,230 LBS)

Ø120" MANHOLE BASE  
WEIGHT 15,375 LBS

## SECTION VIEW

### NOTES:

1. MANHOLE ASSEMBLY CONFORMS TO ASTM-C478.
2. ALL MANHOLE JOINTS SEALED WITH MASTIC OR RUBBER GASKET.
3. WEIGHTS LISTED ARE APPROXIMATE.
4. GRADE RINGS AVAILABLE AS NEEDED.